

# Texas Transportation Forum

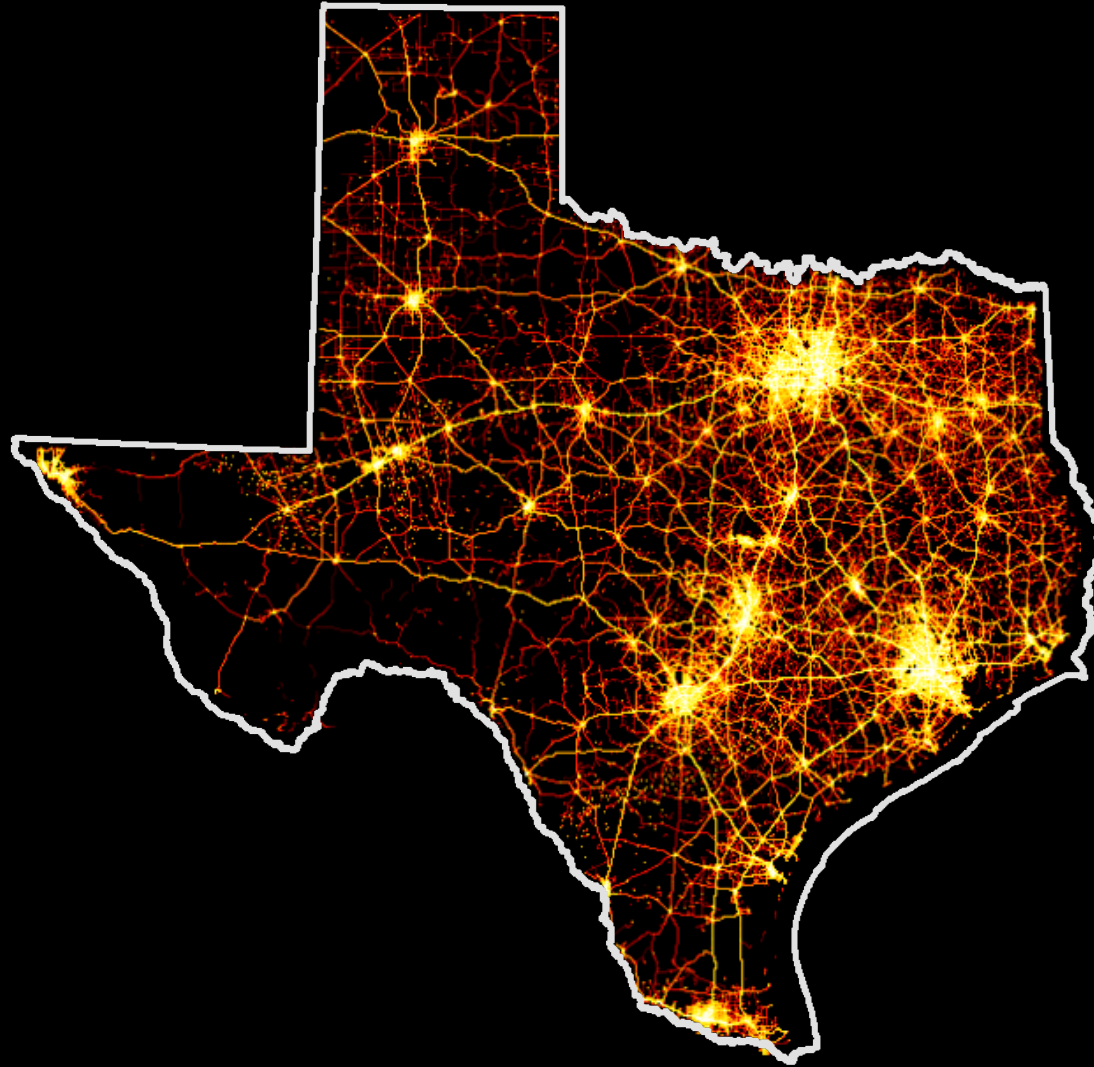
---

## Putting Connected Vehicle Data to Work

Michael Martin  
Texas A&M Transportation Institute

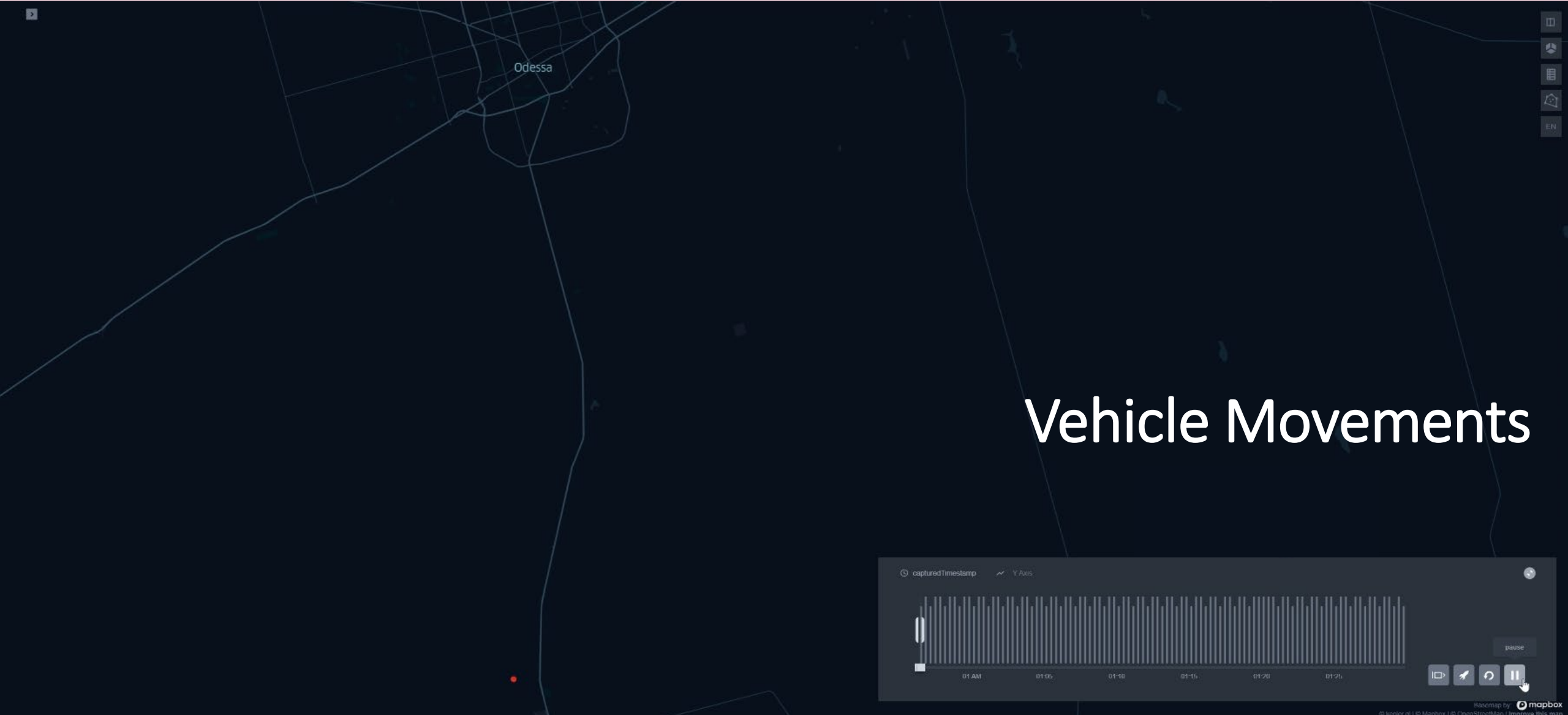
February 8, 2022





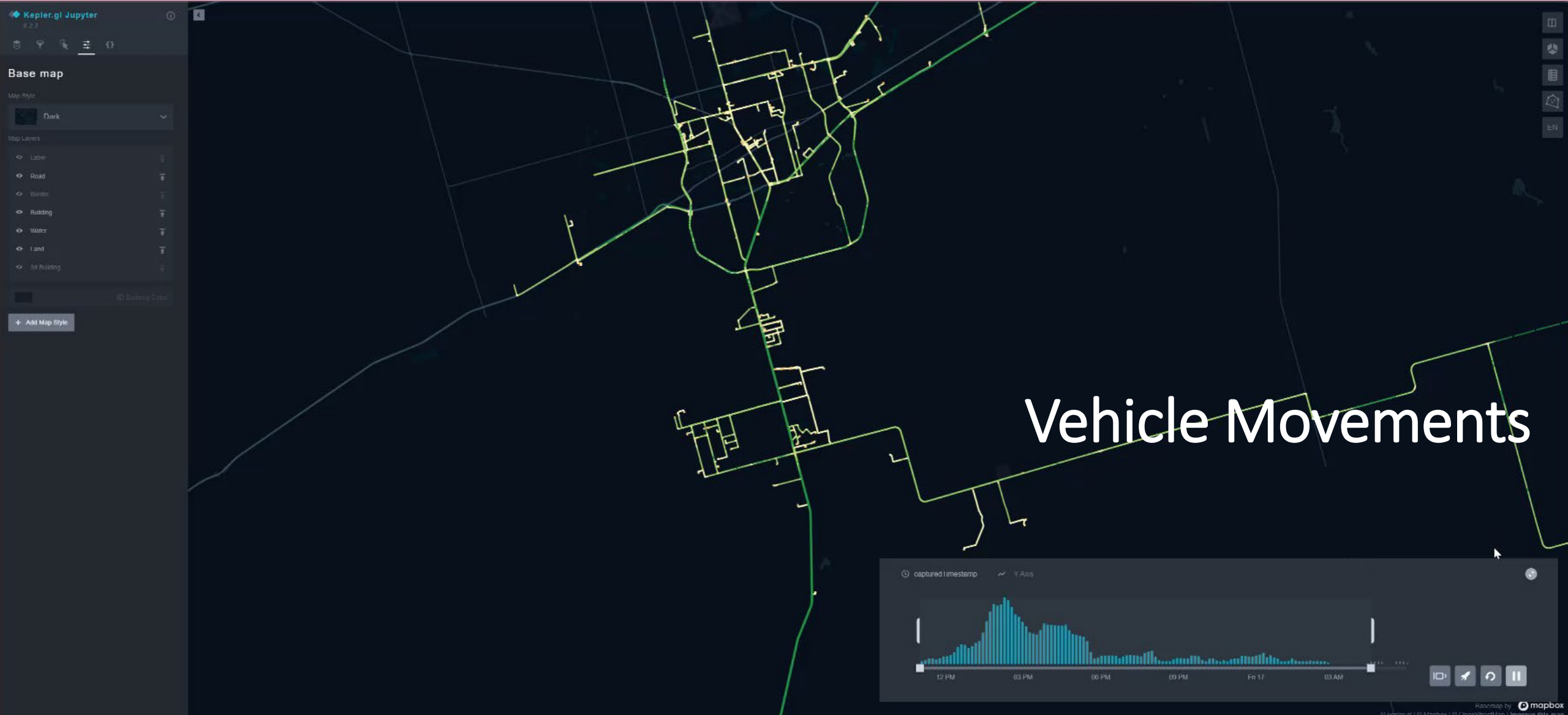
# Texas-size Data: Urban & Rural





# Vehicle Movements







# Aggregate Results



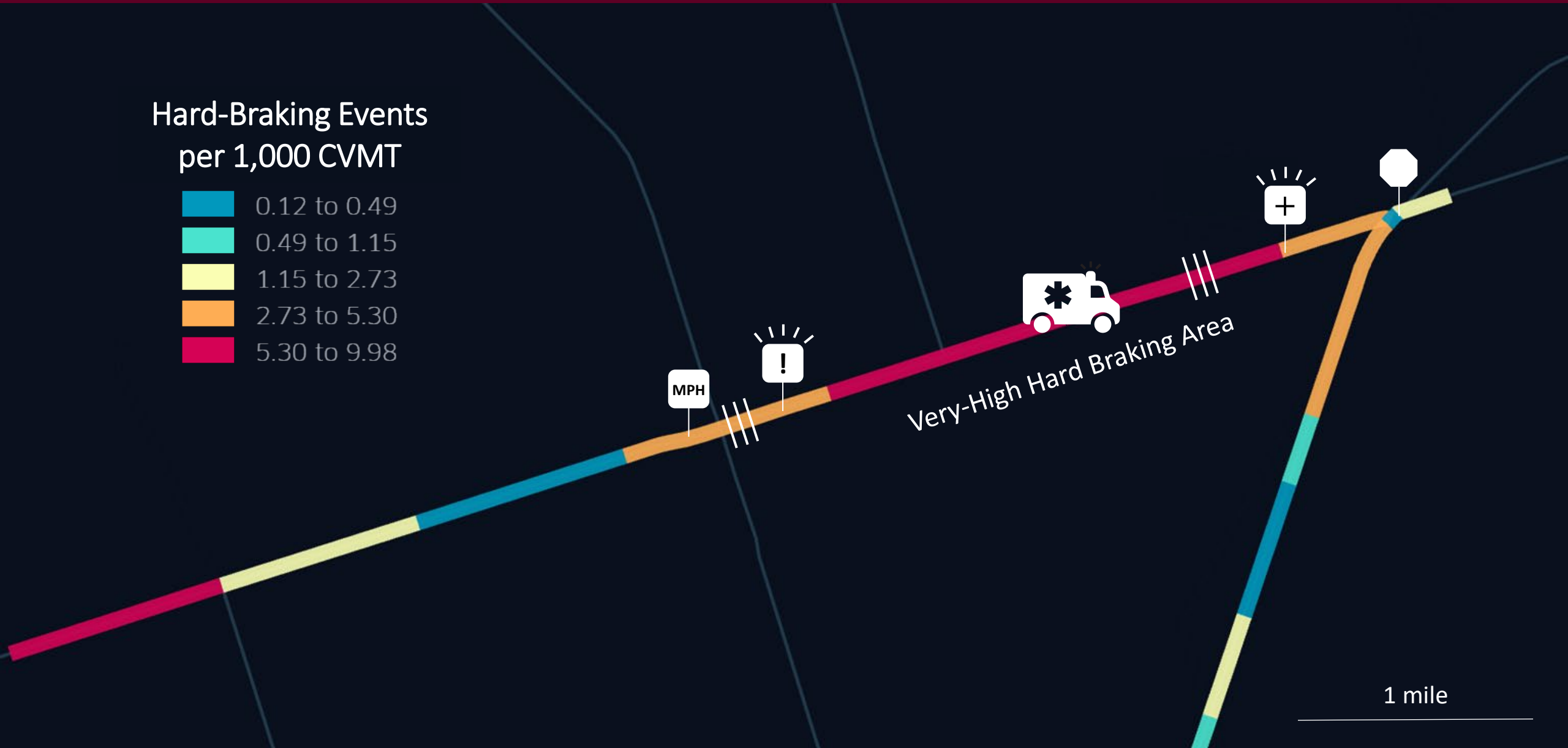
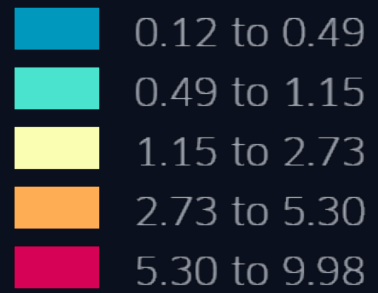


# Seat belt latching





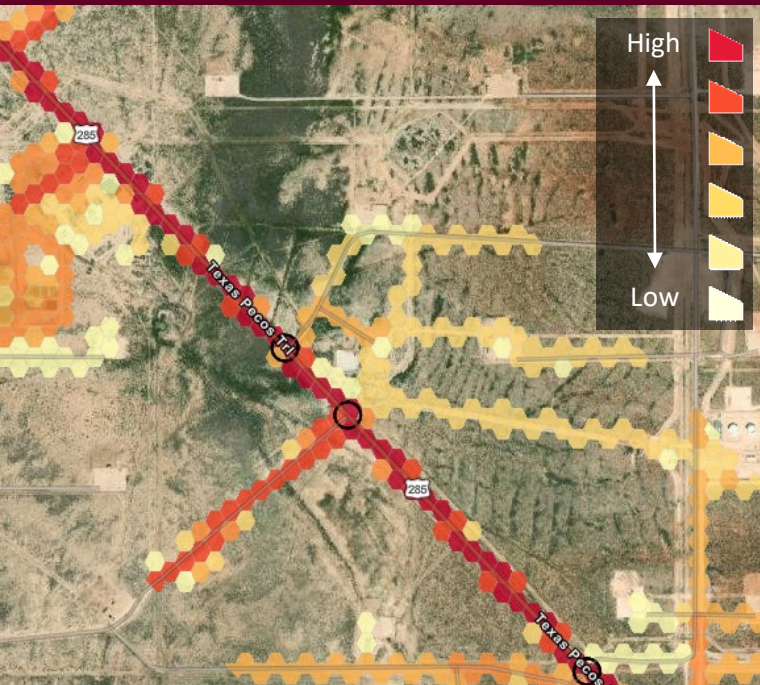
## Hard-Braking Events per 1,000 CVMT



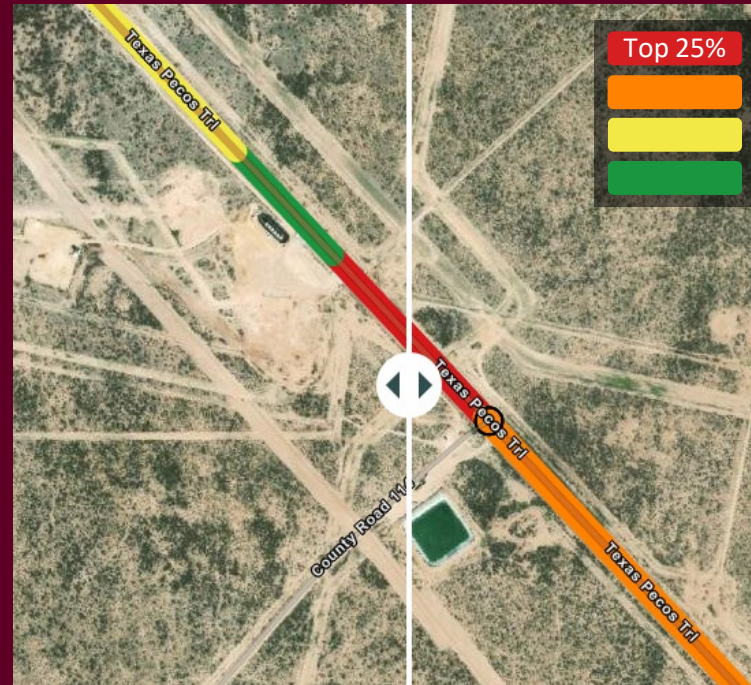


# Informing Engineering Decisions

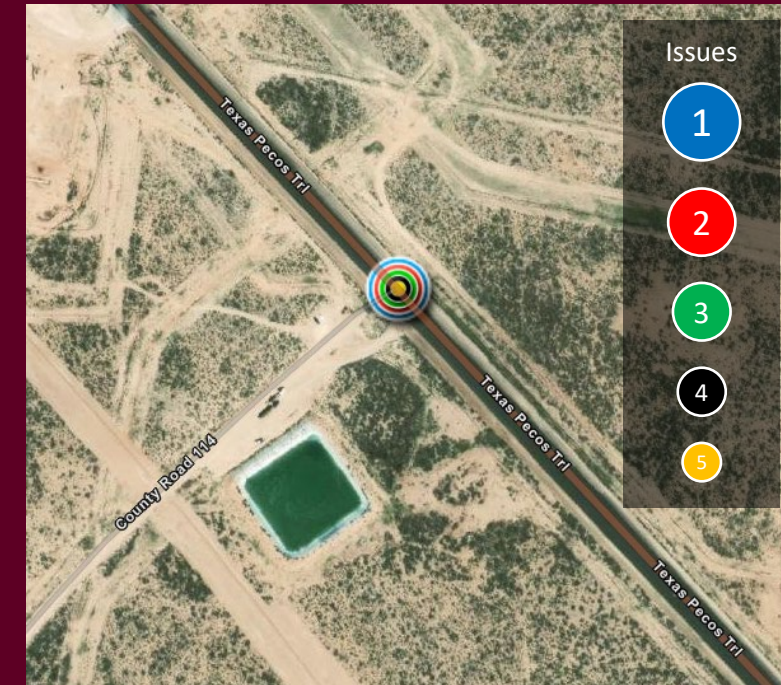
Where & How People Travel



Safety Assessments



Targeting Opportunities





**Our work  
thus far with  
connected  
vehicle data**



# “Conquering the iceberg”

- Develop & maintain public-private partnerships on data
- Collaborate across skill sets
  - Practitioners + subject matter experts + data scientists/engineers
- Build professional capacity
  - State-of-the-art big data tools
  - Spirit of innovation and discovery

# “Avoid another Titanic”

- Follow best practices for data privacy
  - TX SB 475 (Opt-in passive data collection)
  - Institutional controls
- Be proactive and transparent with the public
  - Explain the tradeoff – your data for a safer & smoother trip
- Avoid using “their data against them”
  - Tread very carefully with anything related to enforcement